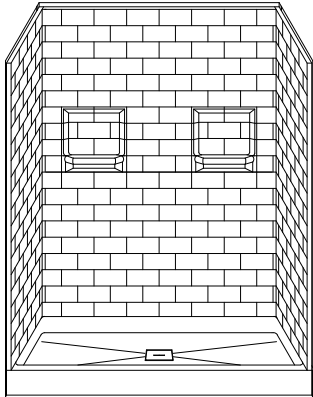


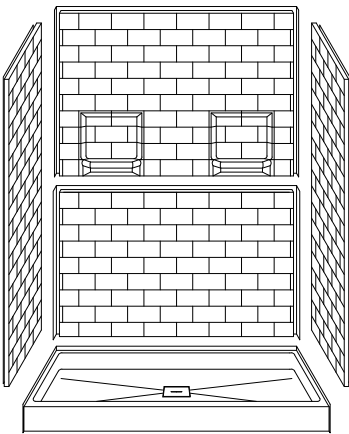
MODEL: 5LBS6032SQAFR*

REMODELER

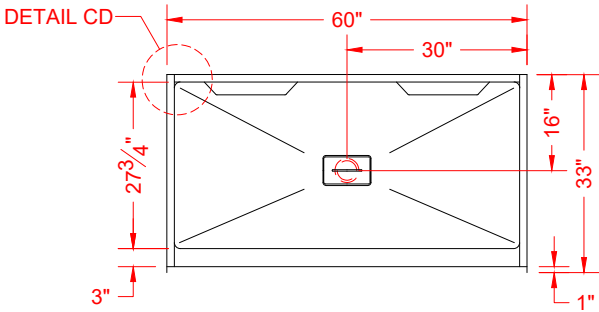
*ALL ACCESSORIES OPTIONAL



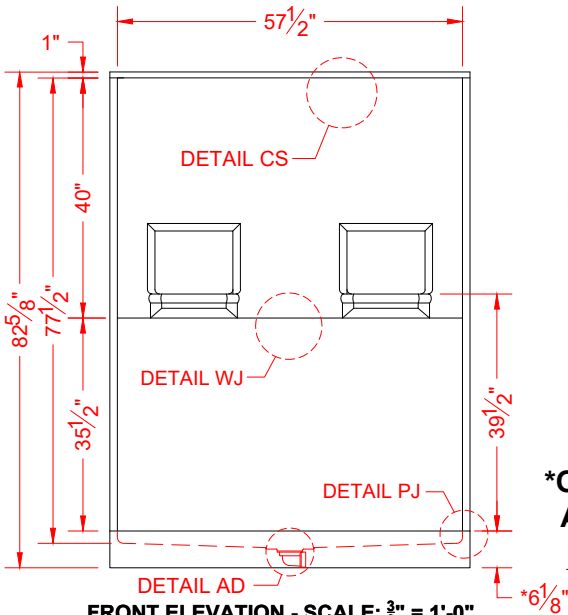
PERSPECTIVE VIEW - N.T.S.



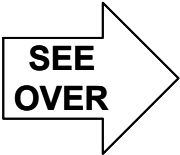
ASSEMBLY VIEW - N.T.S.



TOP VIEW - SCALE $\frac{3}{8}'' = 1'-0''$



FRONT ELEVATION - SCALE: $\frac{3}{8}'' = 1'-0''$




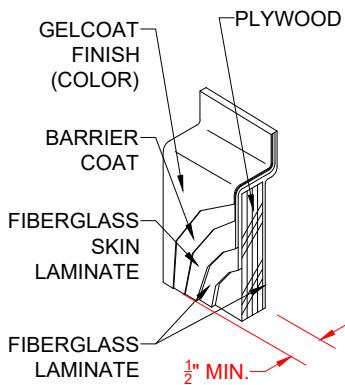
Features:

- Molded, five-piece gelcoat/fiberglass shower module
- "Subway Tile", 4" x 8" simulated tile wall finish, white (standard)
- Integral full wood backing for strength and unlimited accessory placement
- Above floor rough allows for a minimum of 3" clearance from the bottom of the drain recess to the sub floor

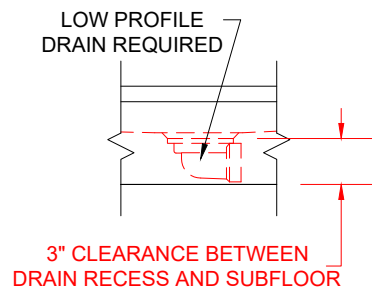
***OTHER THRESHOLD HEIGHTS AVAILABLE UPON REQUEST
MAX TRIM HEIGHT OF 7-1/2"**

* - SEE BACK FOR DETAIL SECTIONS

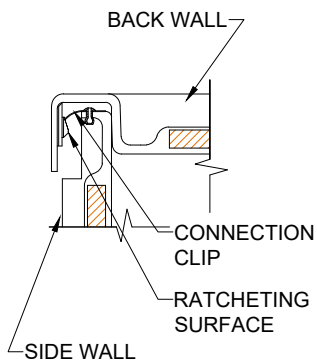
PRODUCT SPECIFICATIONS: -Multi-piece shower module shall be constructed of gelcoat/fiberglass with full integral plywood backing -Rough-In: Stud opening +1/4" -0" Nominal Dimensions. C.S.I. FORMAT SPECIFICATION TEXT AVAILABLE		
PRODUCT INFORMATION: -Accessories: Factory installed, unless prone to damage during installation/shipping. Polished chrome/satin stainless standard, others available. -Colors: White as standard, others to match any major fixture manufacturer, also available with sprayable solid surface in many colors -Custom curb heights, other than shown, are available (between min. and max.)	OPTIONAL ACCESSORIES: <u>INSTALLED BY OTHERS:</u> -Seat, folding -Grab bar -Soap dish -Mixing valve, pressure-balancing, lever handle, pre-plumbed tee to supply elbow -Curtain rod brackets -Curtain and rod -Drain grate and No-caulk brass drain (INCLUDED)	CODES: <u>Designed and manufactured in compliance with the following standards and codes:</u> -ANSI Z124.2 Standards for Plastic Showers -IPC International Plumbing Code -UPC Uniform Plumbing Code
 <i>We reserve the right to make revisions without notice in the design of fixtures or in packaging unless this right has specifically been waived at the time the order is accepted.</i>		NOTICE OF LIMITATION:
		page 1 of 2



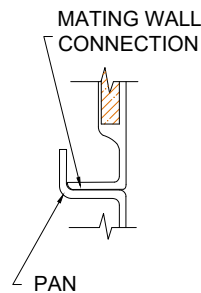
DETAIL CS - SCALE: N.T.S.
CROSS SECTION DETAIL



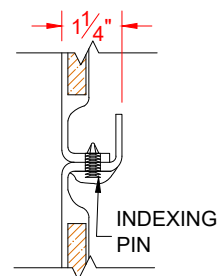
DETAIL AD - SCALE: N.T.S.
AFR DETAIL



DETAIL CD - SCALE: 3" = 1'-0"
CORNER DETAIL



DETAIL PJ - SCALE: 3" = 1'-0"
PAN JOINT DETAIL



DETAIL WJ - SCALE: 3" = 1'-0"
WALL JOINT DETAIL